

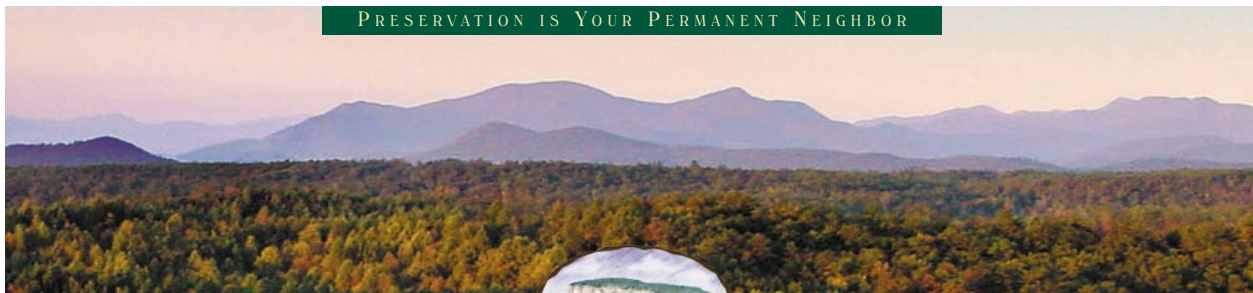


THE MOUNT MITCHELL

See Reverse Side
for Floor Plans

- 1½ story on an unfinished basement with 5 bedrooms/3 bathrooms and a loft
- 2,554 heated square feet, 2,670 unheated square feet
- An optional finished basement adds 2nd master suite with bath, family room, and 955 heated square feet
- Covered porches
- Open decks
- 6x12 Logs on main level with a 30 Year Manufacturer Warranty
- Log siding or board and batten on second level
- Optional stacked stone on foundation
- Ventless gas fireplace
- Many interior finishing options are available

Look out the window or step out onto the porch to enjoy Pisgah Preserve's many stunning views ...



PRESERVATION IS YOUR PERMANENT NEIGHBOR

©2008 Pisgah Preserve

The Mount Mitchell - updated 9/5/08

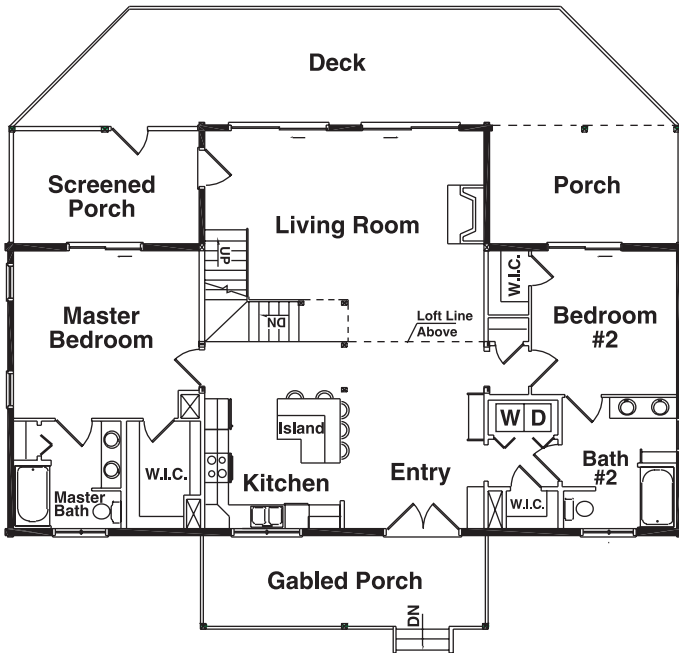


Pisgah Preserve
AT LAKE JAMES

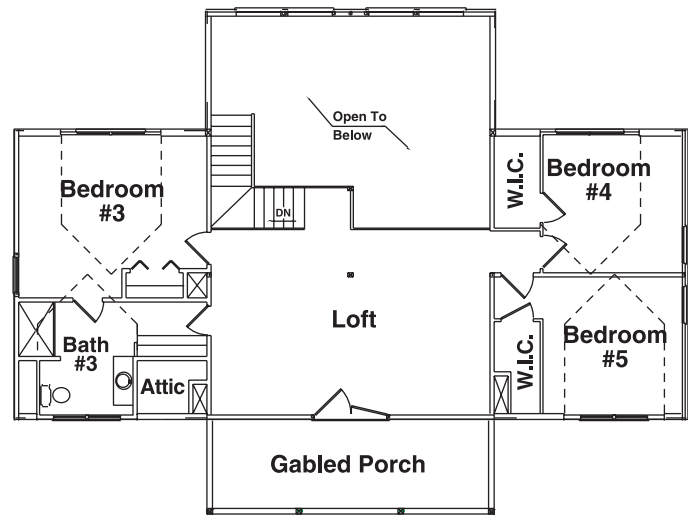
Post Office Box 9148 • Morganton, NC 28680

828-448-1473 phone • Email: info@pisgahpreserve.com • www.pisgahpreserve.com

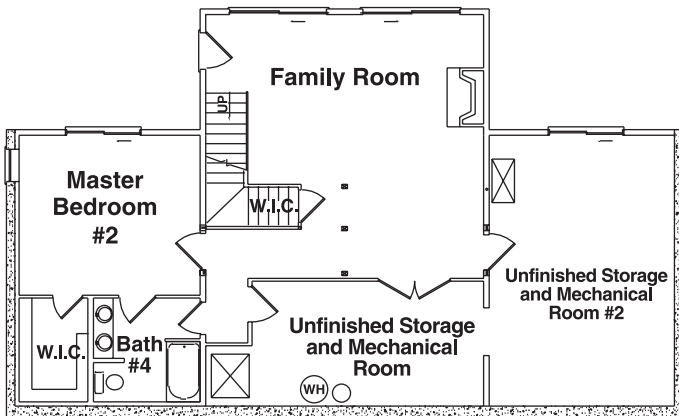
1st Floor Plan



2nd Floor Plan



Optional Basement Floor Plan



THE MOUNT MITCHELL

Square Foot Totals

1st Floor = 1,584 ft²

2nd Floor = 970 ft²

Optional Basement = 955 ft²

Total Heated ft² = 3,509 ft²

Unfinished Basement = 629 ft²

Gable Porch = 192 ft²

Screen Porch = 160 ft²

Rear Porch = 160 ft²

Lower Deck = 460 ft²

Upper Decks = 114 ft²

Total Unheated ft² = 1,715 ft²